



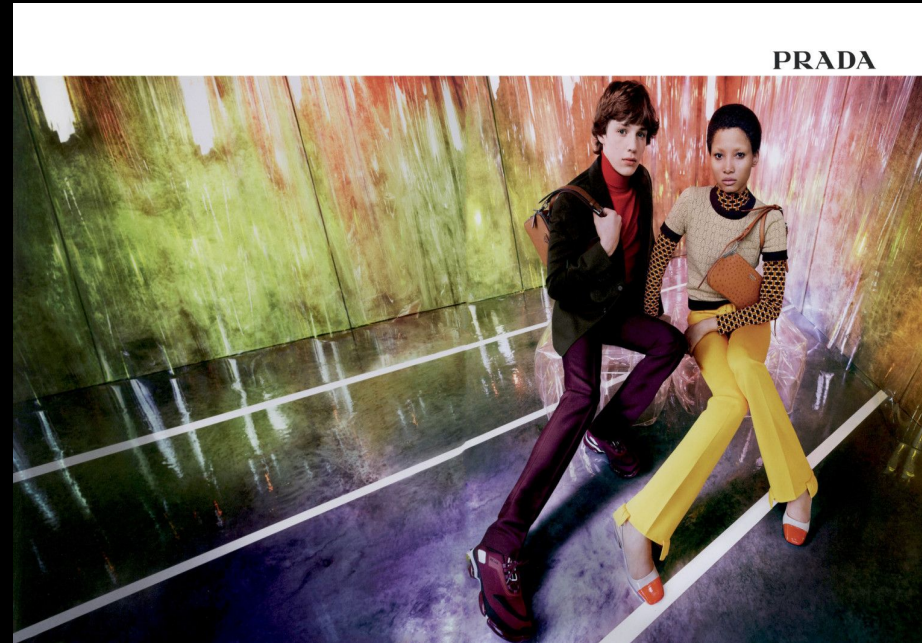
This page: MATS WEARS HIS OWN CLOTHES. Opposite page: GISELLE WEARS A BEIGE SILK DRESS, LOUIS VUITTON, BROWN SILK TROUSERS, SIES MARIAN, BLACK PATENT SHOES, CHANEL.

MATS
BRAVO MODELS



MATS

HEIGHT: 186cm CHEST: 89cm WAIST: 75cm HIPS: 91cm
SHOES: 27cm HAIR: Dk.blonde EYES: Blue Gray



PRADA

